

# HCT-1000 Programmable Hand Held Convection Tool



## Fast and Easy Removal and Placement of SMT Components

The HCT-1000 System is a fully programmable hand held convection rework tool for the removal and placement of SMT components. It features digital controls, internal or external thermocouple feedback control, multi-stage profiling capability, profile storage, and integrated vacuum pick-up for component placement and removal. Additionally, with multiple modes of operation including manual, 4 zone heating, and as part of the OKi Modular Rework System (MRS), the HCT-1000 stands out as a versatile convection tool.

The hand-piece features vacuum and reflow buttons allowing the process to be operated manually or automatically through a profile. Additionally, the vacuum has the option for automatic lift off of components, at the end of the removal profile, taking guesswork out of the operators' hands and improving process control.

For more complex applications, this system can also be integrated with a pre-heater (PCT-1000) and adjustable hand tool holder (ATH-1000) as part of the MRS System. In this mode the HCT-1000 provides timing control for both the HCT-1000 and PCT-1000 and allows repeatable place and remove operations.

### HN Series Nozzles

A series of 14 Nozzles are available for use with the HCT-1000. The nozzles fit applications reworking components of all sizes from (including, but not limited to) BGAs, QFPs, LGAs, PLCC and SOIC.

### Key Features & Benefits

- Integrated vacuum pickup for easy component removal
- Profile creation for operator repeatability
- Manual mode for quick setup
- External thermocouple for process setup and verification
- Hand-piece controls for heater and vacuum
- Programmable, Digitally controlled airflow for repeatable results
- Multiple modes of operation: manual, 4 zone heating, with OKi Modular Rework System (MRS) System
- Configurable to use internal or external thermocouple control

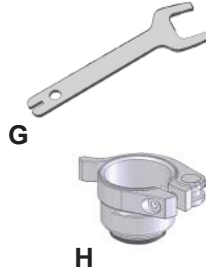
# HCT-1000 Programmable Hand Held Convection Tool

## HCT-1000 Programmable Hand-held Convection Tool

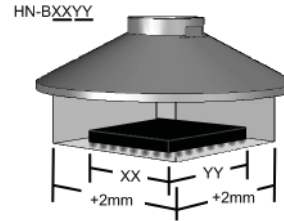
Part Number	Description
HCT-1000	Programmable Hand-held Convection Tool
HCT-PS1000	HCT-1000 Power Supply
HCT-HV1	Hand-piece with integral vacuum, cord and connector
HCT-FS2	Footswitch, Dual, HCT-1000

### Accessories

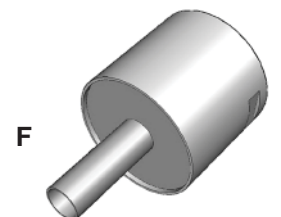
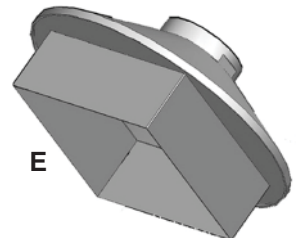
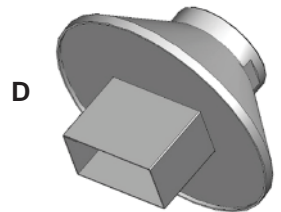
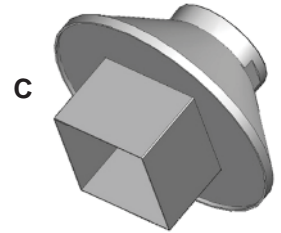
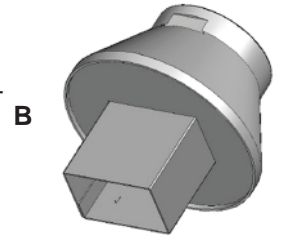
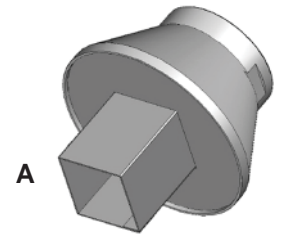
HCTA-VC50-5	Vacuum Cup, 3/16" (5.00mm), pack of 5
HCTA-VC64-5	Vacuum Cup, 1/4" (6.4mm), pack of 5
HCTA-VC80-5	Vacuum Cup, 5/16" (8mm), pack of 5
HCTA-VC11-5	Vacuum Cup, 7/16" (11mm), pack of 5
HCT-NC	Nozzle Carrier, HCT-1000 nozzles
HCTA-TH1	Hand-piece tool Holder
HCT-AD	Nozzle Adapter (H)
HCTA-NW1	Nozzle Wrench (G)
AC-TCK-24-36	Thermocouple
HCTA-CC	Communications Cable
HCT-HTRASSY	Heater Assembly



## HN Series Nozzles: Measurement and Selection



The nozzle part number (specifically the digits after the "B") represents the size of the component. 2mm has been added to each side to allow for component access.



### HN Series Nozzles

Part Number	Description	Components
A HN-B0707	7mm X 7mm	CSP, LGA44
A HN-B1010	10mm X 10mm	CSP, LGA178, LCC28
A HN-B1414	14mm X 14mm	CSP, QFP, TQFP100
B HN-B1408	14mm X 8mm	CSP, SOIC24M
C HN-B1515	15mm X 15mm	BGA
C HN-B1818	18mm X 18mm	PLC44, CSP, TQFP100, BGA
C HN-B2525	25mm x 25mm	BGA, PLCC68
D HN-B1809	18.2mm X 8.5mm	SOLJ28, SOIC28M, TSOP32
D HN-B2519	24.5mm X 18.5mm	QFP100, QFP80
E HN-B2727	27mm X 27mm	BGA
E HN-B3232	32mm X 32mm	BGA
E HN-B3535	35mm X 35mm	BGA
E HN-B4040	40mm X 40mm	BGA
F HN-J0005	5mm Diameter	DISCRETE

HCT-1000 Specifications	
Size	9" x 7" x 6" (229mm x 178mm x 152mm)
Weight	12 lbs.
Rated Power	600 W
Input Voltage	100-240 VAC, 50/60 Hz
Operating Temperature	0°C to 50°C (32°F to 122°F)
Control Temperature	450°C (842°F)
Air Flow	5-25 l/minute
Vacuum Pump	15" Hg (381mm Hg)
Noise Level	<55 dB
Approvals	TUV