



A Donaldson Company

A WORLD LEADER IN FUME
EXTRACTION TECHNOLOGY



FILTRATION AND ATMOSPHERE MANAGEMENT FOR ADDITIVE MANUFACTURING AND 3D PRINTING

- Fused deposition modelling
- VAT polymerisation
- Material jetting
- Directed energy deposition
- Powder bed fusion
- Binder jetting
- Sheet lamination
- Post-processing

METALS | POLYMERS | HIGH TEMPERATURE PROCESSES



3D printing is a rapidly growing industry, with new applications and materials being processed every day. With more affordable systems on the market, 3D printing is fast becoming part of everyday small scale and mass manufacturing.

The use of an effective atmosphere management and filtration system is an important part of your overall strategy to help protect employee safety and maintain reliability of the equipment to help safeguard the quality.

Our 3D PrintPRO and AM ranges have been developed specifically for the 3D printing and additive manufacturing markets, applying our 35 years of experience designing, developing and manufacturing cutting-edge portable fume extraction systems for a range of industries. We work with customers to understand individual requirements and help ensure you have the most appropriate system for your process.

FOR MORE INFORMATION

Speak to our knowledgeable team today!

Email. bofasales@donaldson.com

Tel. +44 (0) 1202 699 444

Web. bofainternational.com

CONTENTS

Connectors	'Print your own' connectors	4
3D PrintPRO 2	Small format 3D printers	5
3D PrintPRO 3	Medium sized 3D printers	5
3D PrintPRO 4	Premium system for large scale 3D printers; print farms with multiple 3D printers within a cabinet	6
3D PrintPRO HT	Medium sized high temperature 3D printers	6
AD Oracle iQ	Versatile production intent fume and powder extractor with digital connectivity	7
AD Cyclone	Optional inline filter that complements the AD Oracle iQ	7
AM 400	Inert particulate filtration - powder bed fusion processes	8
Post-processing	Systems and accessories designed for post-processing applications	9



'Print your own' connectors

- for small to medium format 3D printers

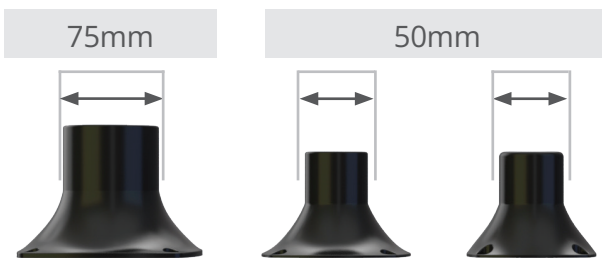
Don't have a way to connect your extractor to your 3D printer? The print your own connector files are **free of charge** and available from our website - bofainternational.com/print-your-own

Suitable for:
3D PrintPRO 3
3D PrintPRO 4

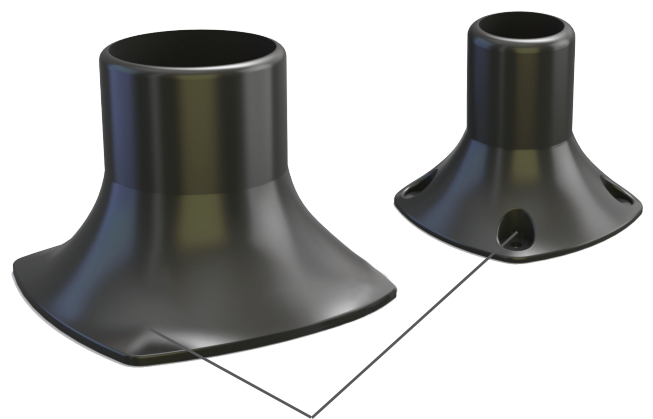
There are five different sizes available with a choice of adhesive or bolted options.

Spigot sizes:	50 / 75 mm
Axial fan sizes:	60 / 70 / 92 / 120 mm

- 60 mm – 50 mm
- 70 mm – 50 mm
- 92 mm – 50 mm
- 92 mm – 75 mm
- 120 mm – 50 mm
- 120 mm – 75 mm



For connection types not shown here, contact us.



Designed with or without screw holes

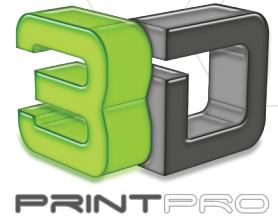
bofainternational.com/print-your-own



3D PrintPRO 2

filtration and atmosphere management system

- for small format 3D printers (build volume < 0.03m³)



Suitable for: FDM; SLA; DLP

Filters fume	✓ Filtered air, environment and printer chamber ✓ Helps protect people and equipment ✓ Reduces odour
Long filter life	✓ Maximum uptime
HEPA filter status indicator	✓ Accurate and timely filter changes
Remote start / stop	✓ Integrated to turn on / off with host unit
Moves air	✓ Ability to help manage heat
Low noise	✓ Less aural disruption
Compact and lightweight	✓ Easy to manoeuvre ✓ Small footprint
Simple set up	✓ Quick, intuitive installation
Universal voltage	✓ Single part number for global use
Detachable power lead	✓ Easy part set up for multiple locations



Dimensions	330 x 290 x 270mm 12.99 x 11.42 x 10.63"
Airflow	45m ³ /hr / 9mbar 26cfm / 9mbar
Approvals	CE and UKCA



3D PrintPRO 3

filtration and atmosphere management system

- for medium sized 3D printers (0.03m³ < build volume < 0.2m³)

Suitable for: FDM; SLA; DLP; material jetting

Filters fume *	✓ Filtered air, environment and printer chamber ✓ Helps protect people and equipment ✓ Reduces odour
Long filter life	✓ Maximum uptime
HEPA filter status indicator	✓ Accurate and timely filter changes
Remote start / stop	✓ Integrated to turn on / off with host unit
Variable air movement (speed control)	✓ Ability to help manage heat ✓ Better part quality ✓ Adjust to fit ideal flow rate ✓ Adjust to change settings between processes
Low noise	✓ Less aural disruption
Compact and lightweight	✓ Easy to manoeuvre ✓ Small footprint
Simple set up	✓ Quick, intuitive installation
Universal voltage	✓ Single part number for global use
Detachable power lead	✓ Easy part set up for multiple locations



Dimensions	400 x 290 x 300mm 15.75 x 11.42 x 11.81"
Airflow	120m ³ /hr / 18mbar 70cfm / 18mbar
Approvals	CE and UKCA (available with UL** approval: 3D PrintPRO 3+)

* Supplied with connection hoses and print your own plenum instructions.

** Tested to UL and cUL standards, but testing may be provided by alternate nationally recognised test laboratories. Certain product configurations may affect the UL certification. Please speak to your sales representative.



3D PrintPRO 4

filtration and atmosphere management system

- premium system for large scale 3D printers; print farms with multiple 3D printers within a cabinet (build volume > 0.2m³)

Suitable for: FDM; SLA; DLP; material jetting

Filters fume	✓ Filtered air, environment and printer chamber ✓ Helps protect people and equipment ✓ Reduces odour
Extra long filter life	✓ Large carbon bed ✓ Maximum uptime
HEPA and optional gas filter status indicator	✓ Accurate and timely filter changes
Optional remote start / stop	✓ Integrated to turn on / off with host unit
Variable air movement (speed control)	✓ Ability to help manage heat ✓ Better part quality ✓ Adjust to fit ideal flow rate ✓ Adjust to change settings between processes
Override switch	✓ Extractor can operate without host machine ✓ Easier to test unit function
Low noise	✓ Less aural disruption
Compact	✓ Small footprint
Lockable castors	✓ Easy to manoeuvre
Simple set up	✓ Quick, intuitive installation
Universal voltage	✓ Single part number for global use
Detachable power lead	✓ Easy part set up for multiple locations



Dimensions	625 x 385 x 525mm 24.61 x 15.16 x 20.67"
Airflow	270m ³ /hr / 96mbar 224cfm / 96mbar
Approvals	CE and UKCA cUL UL**

** Tested to UL and cUL standards, but testing may be provided by alternate nationally recognised test laboratories. Certain product configurations may affect the UL certification. Please speak to your sales representative.



3D PrintPRO HT

filtration and atmosphere management system

- for medium sized high temperature 3D printers (0.03 m³ < build volume < 0.2m³)

Suitable for: High temperature FDM; SLA; DLP; material jetting

Continuous high temperature particulate removal	✓ Filtered air, environment and printer chamber ✓ Helps protect people and equipment
End of print cycle high temperature particulate and gas removal	✓ Reduces particulate and odour
Long filter life	✓ Maximum uptime
HEPA filter status indicator	✓ Accurate and timely filter changes
Automated circulation to purge function	✓ Extractor can tell host machine when maintenance is required
Remote start / stop	✓ Integrated to turn on / off with host unit
Low noise	✓ Less aural disruption
Compact	✓ Easy to manoeuvre ✓ Small footprint
Simple set up	✓ Quick, intuitive installation
Universal voltage	✓ Single part number for global use
Detachable power lead	✓ Easy part set up for multiple locations



Dimensions	400mm x 00 x 597mm 15.75 x 15.75 x 23.5"
Airflow	150m ³ /hr / 18mbar 88cfm / 18mbar
Approvals	CE and UKCA



AD Oracle iQ

filtration and atmosphere management system

- versatile production intent fume and powder extractor with digital connectivity



Suitable for: material jetting; binder jetting; SLM and PBF of polymers; post-processing

Filters fume	<ul style="list-style-type: none"> ✓ Filtered chamber environment and clean laser lens ✓ Higher quality process ✓ Helps protect people and equipment
Long filter life	<ul style="list-style-type: none"> ✓ Maximum uptime ✓ Less disruption
User friendly interface	<ul style="list-style-type: none"> ✓ Intuitive interface allows accessibility of functions for all users
Flow control	<ul style="list-style-type: none"> ✓ Adjust to fit ideal flow rate ✓ Constant flow, despite filter saturation ✓ Airflow measured and displayed ✓ Better part quality
Enhanced system status indicators	<ul style="list-style-type: none"> ✓ System alarms shown on screen / through signal wires ✓ System data live on screen for machine optimisation ✓ Easy identification of extraction problems ✓ Easy download of log file to assess issues
Filter status indicator	<ul style="list-style-type: none"> ✓ Accurate and timely filter changes
Remote start / stop	<ul style="list-style-type: none"> ✓ Integrated to turn on / off with host unit
HEPA and gas filter status indicator	<ul style="list-style-type: none"> ✓ Accurate and timely filter changes
Override switch	<ul style="list-style-type: none"> ✓ Extractor can operate without host machine ✓ Easier to test unit function
Low noise	<ul style="list-style-type: none"> ✓ Less aural disruption
Compact	<ul style="list-style-type: none"> ✓ Small footprint
Lockable castors	<ul style="list-style-type: none"> ✓ Easy to manoeuvre
Simple set up	<ul style="list-style-type: none"> ✓ Quick, intuitive installation
Universal voltage	<ul style="list-style-type: none"> ✓ Single part number for global use
Optional Cyclone inline filter	<ul style="list-style-type: none"> ✓ Extends filter life and extractor performance



Dimensions	975 x 440 x 515 mm 38.39 x 17.32 x 20.28"
Airflow	380m ³ /hr / 96mbar 223cfm / 96mbar
Approvals	CE and UKCA cUL UL**

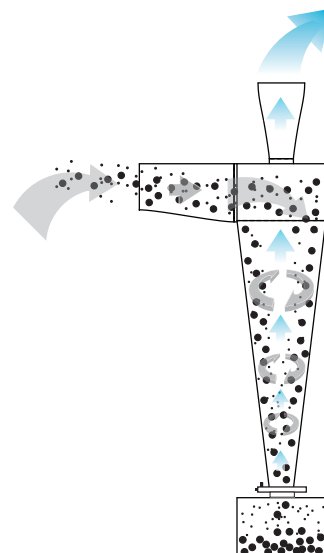
** Tested to UL and cUL standards, but testing may be provided by alternate nationally recognised test laboratories. Certain product configurations may affect the UL certification. Please speak to your sales representative.



AD Cyclone

- an optional inline filter and can be developed to suit your specific requirements

Dimensions	800 x 300 x 140mm 31.5 x 11.81 x 5.51"
------------	---





AM 400

filtration and atmosphere management system
- for inert particulate filtration - powder bed fusion processes



Suitable for: Inert atmosphere powder bed processes

Remote isolated ergonomic filter housing	<ul style="list-style-type: none"> ✓ Filter kept under inert conditions when housing removed ✓ Ability to move un-processed filter to remote, safe area for passivation ✓ Easy to move and use
Filters fume	<ul style="list-style-type: none"> ✓ Clean chamber environment and laser lens ✓ Higher quality process ✓ Helps protect people and equipment
Long filter life	<ul style="list-style-type: none"> ✓ Maximum uptime ✓ Less disruption
Low leakage	<ul style="list-style-type: none"> ✓ Less oxygen ingress ✓ Higher quality of printed parts ✓ Less inert gas loss
Quick filter change	<ul style="list-style-type: none"> ✓ Reduced time to change filter
Flow control	<ul style="list-style-type: none"> ✓ Adjust to fit ideal flow rate ✓ Constant flow, despite filter saturation ✓ Airflow measured and displayed
System status indicator	<ul style="list-style-type: none"> ✓ System alarms shown on screen / through signal wires ✓ Easy identification of extraction problems ✓ Easy download of log file to assess issues
Filter status indicator	<ul style="list-style-type: none"> ✓ Accurate and timely filter changes
Remote start / stop	<ul style="list-style-type: none"> ✓ Integrated to turn on / off with host unit
Easy to clean internals	<ul style="list-style-type: none"> ✓ Enables complete and thorough cleaning of gas path
High performance pump	<ul style="list-style-type: none"> ✓ Able to overcome complicated installations ✓ Consistent high volume flow
Lockable castors	<ul style="list-style-type: none"> ✓ Easy to manoeuvre



Dimensions	790 x 857 x 1670mm 31.10 x 33.74 x 65.75"
Airflow	330m ³ /hr / 250mbar 224cfm / 250mbar
Approvals	CE and UKCA

Post-processing

Dusts and powders from mechanical finishing, solvents (IPA) from vapour finishing and support material removal



FumeCAB 250
filtration and atmosphere management cabinet system

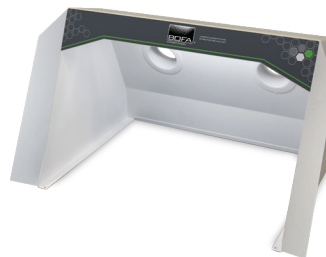
A small but versatile fume cabinet which can be used for an array of 3D printing / AM post-processing applications.

Partial enclosures are steadily becoming the preferred option for greater protection on processes that produce potentially harmful fumes.

Suitable for manual post-processing of parts from AM processes.

bofainternational.com/fumecab-250

Dimensions	290 x 400 x 300mm (1.42 x 15.75 x 11.81")
Opening dimensions	265 x 400mm (10.4 x 15.7")



FumeCAB 600
filtration and atmosphere management cabinet system

Providing a larger working area with higher airflow for use in 3D printing / AM applications, the FumeCAB 600 boasts the same features as the FumeCAB 250 and works alongside the DustPRO 400 extraction system to help protect the operator and process.

Suitable for manual post-processing of parts from AM processes.

bofainternational.com/fumecab-600

Dimensions	355 x 610 x 420mm (13.98 x 24.02 x 16.54")
Opening dimensions	315 x 540mm (12.4 x 21.3")



FumeCAB 700
filtration and atmosphere management cabinet system

Suitable as a post-processing filtration and atmosphere management system. This is an all-in-one enclosure with three levels of filtration and integrated LED lighting.

Suitable for manual post-processing of parts from AM processes and filtering off-gassing from washing and curing baths.

bofainternational.com/fumecab-700

Dimensions	780 x 700 x 490mm (30.71 x 27.56 x 19.29")
Opening dimensions	675 x 225mm (26 x 8.8")



FumeCAB 1000 iQ
filtration and atmosphere management cabinet system

Suitable as a post-processing filtration and atmosphere management system with a large working area. This all-in-one enclosure has three levels of filtration, integrated LED lighting and BOFA's Intelligent Operating System (iQ).

Suitable for manual post-processing of parts from AM processes and filtering off-gassing from washing and curing baths.

bofainternational.com/fumecab-1000-iq

Dimensions	1003 x 1000 x 655mm (39.49 x 39.37 x 25.79")
Opening dimensions	285 x 1000 x 650mm (11.2 x 39.4 x 25.6")



DustPRO 400
filtration and atmosphere management system

This filtration and atmosphere management system fits perfectly with the smaller FumeCABs and is compact enough to fit under a desk. It can also be used on its own with two arm connections and accessories.

Suitable for manual post-processing of parts from AM processes.

bofainternational.com/dustpro-400

Dimensions	600 x 290 x 270mm (23.62 x 11.42 x 10.63")
Airflow / Pressure	380m ³ /hr / 96mbar (235cfm / 96mbar)



AD Oracle SA iQ
filtration and atmosphere management system

A compact filtration and atmosphere management system designed for multiple smaller FumeCABs / accessories or a larger 3D system.

Suitable for automated post-processing of parts from AM processes and filtering gases and particles from automatic finishing stations.

bofainternational.com/ad-oracle-sa-iq

Dimensions	740 x 450 x 515mm (29.33 x 17.72 x 20.28")
Airflow / Pressure	380m ³ /hr / 96mbar (223cfm / 96mbar)

3D accessories

bofainternational.com/3d-accessories



WHICH SYSTEM IS MOST APPROPRIATE FOR YOU?

FILTRATION AND ATMOSPHERE MANAGEMENT SYSTEMS	APPLICATION					
	POWDER BED FUSION / DIRECT METAL LASER SINTERING / SELECTIVE LASER MELTING POLYMERS	FUSED DEPOSITION MODELLING (FDM)	VAT POLYMERISATION (SLA / DLP)	MATERIAL JETTING	BINDER JETTING	POST-PROCESS
3D PrintPRO 2		✓	✓			
3D PrintPRO 3		✓	✓	✓		
3D PrintPRO 4		✓	✓	✓		
3D PrintPRO HT		✓	✓	✓		
AM 400	✓					
AD Oracle iQ	✓*			✓	✓	✓
AD Oracle SA iQ						✓
DustPRO 400						✓
FumeCAB 250						✓
FumeCAB 600						✓
FumeCAB 700						✓
FumeCAB 1000 iQ						✓

* When enclosed.

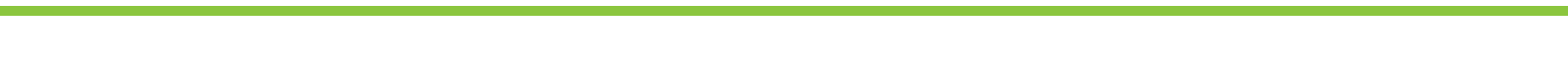
We have over 35 years' experience designing, developing and manufacturing portable fume extraction systems for a wide range of industries and applications, including laser, electronics, 3D printing and additive manufacturing, printing, dental and pharmaceutical. Speak to us today to discuss which BOFA products are most appropriate for your process.

Don't see what you need?

The 3D printing and additive manufacturing industry is moving at a rapid pace with new materials and processes being tested and implemented all the time.

We already work with companies to create personalised and bespoke systems, whether they are stand-alone; ride on; or integrated systems.

Work with BOFA to create the perfect system for you.





A Donaldson Company

A WORLD LEADER IN FUME
EXTRACTION TECHNOLOGY

For further information, please contact us

BOFA head office - UK & ROW: [Tel. +44 \(0\) 1202 699 444](tel:+44201202699444) [Email. bofasales@donaldson.com](mailto:bofasales@donaldson.com)

BOFA German office: [Email. bofavertrieb@donaldson.com](mailto:bofavertrieb@donaldson.com)

BOFA US office: [Tel. +1 \(618\) 205 5007](tel:+16182055007) [Email. bofasalesus@donaldson.com](mailto:bofasalesus@donaldson.com)

[Web. bofainternational.com](http://www.bofainternational.com)